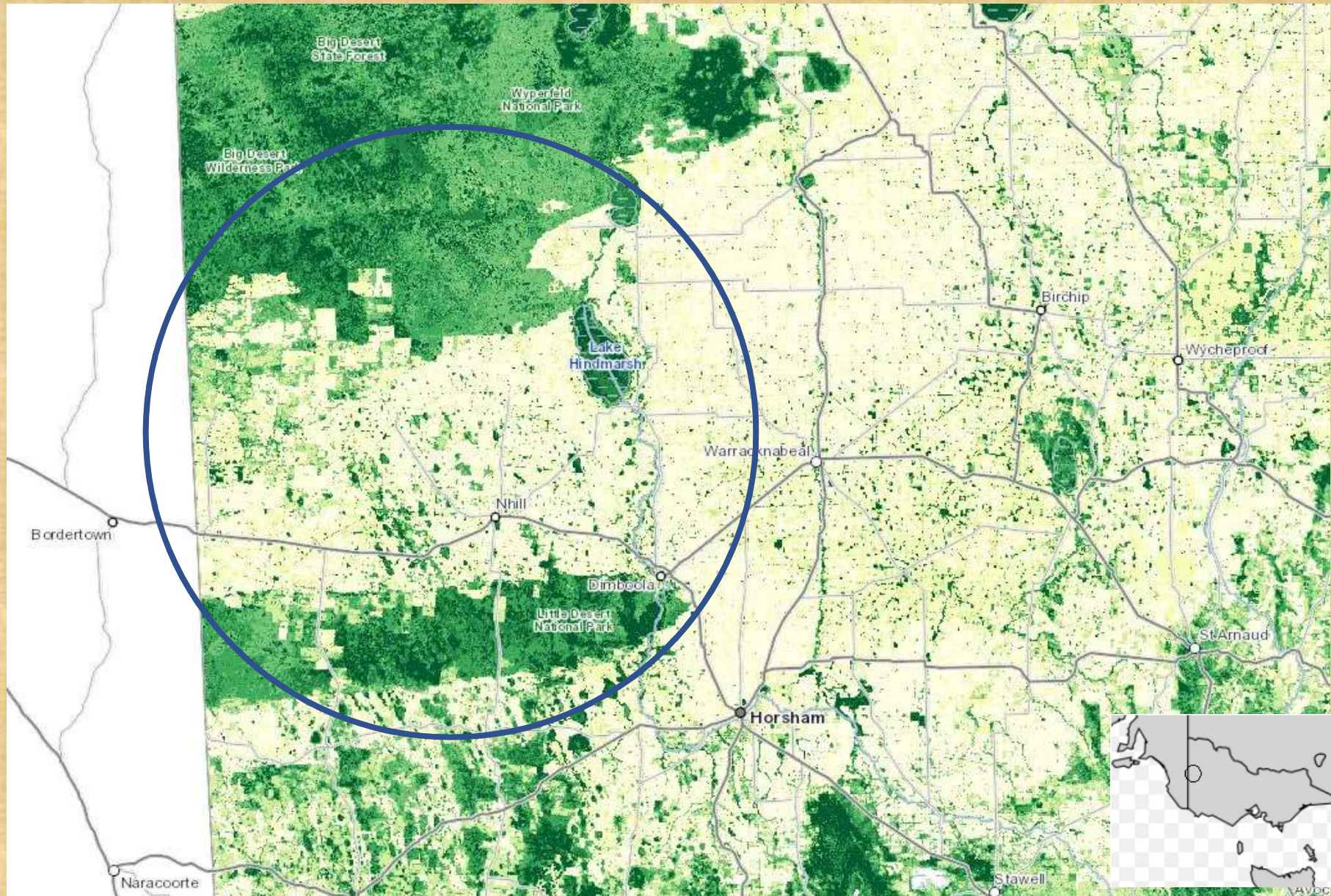




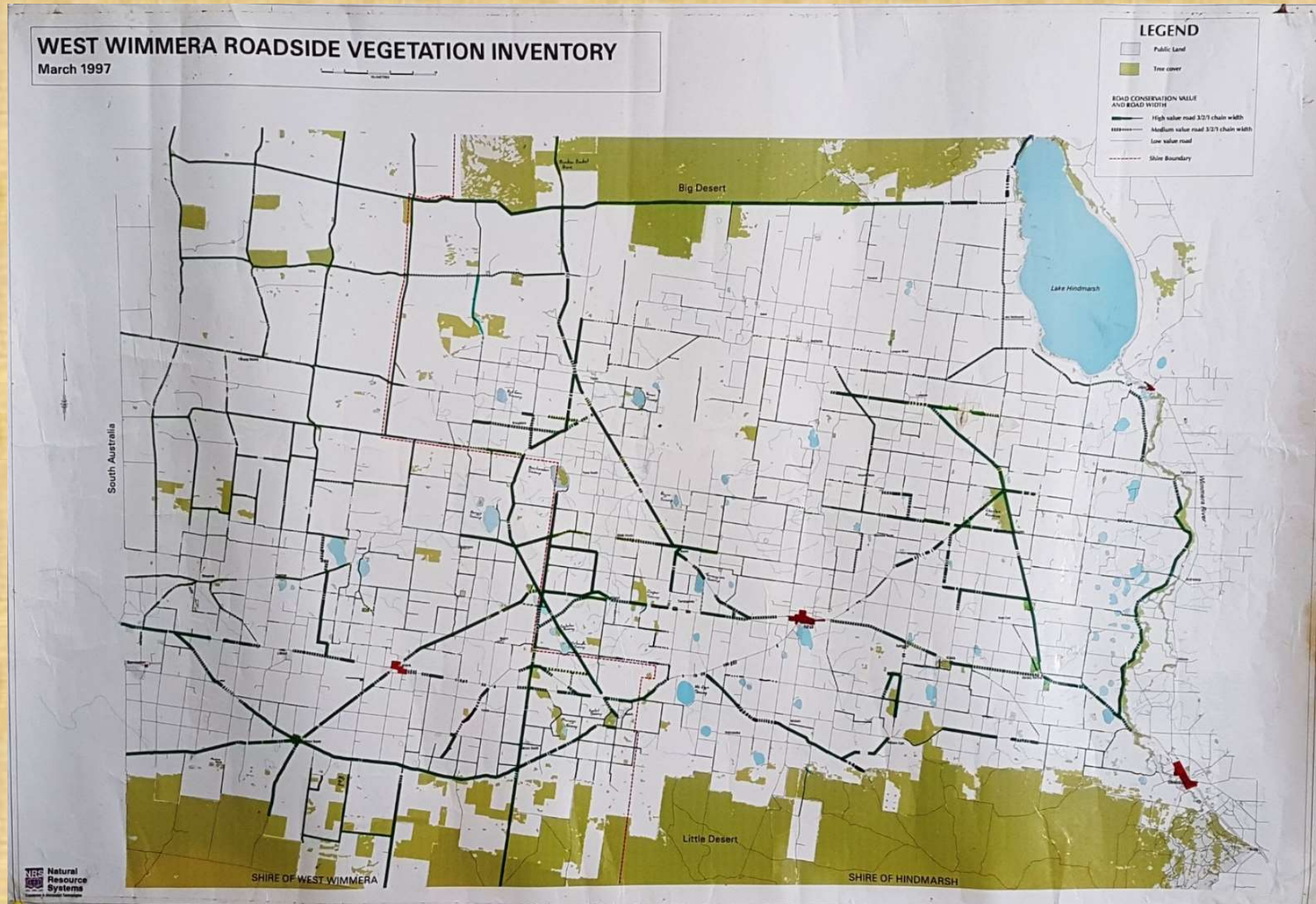
PROJECT HINDMARSH

**A 24 year journey reconnecting the Little Desert
and Big Desert regions in Victoria's wild west**

Victoria's wild west



Where it all began. The Scalzo map.



Initial focus on roadsides



Planting the last tree in the link, 2001



Focus shifted to planting on private land



Project Hindmarsh is a social weekend



Bringing city and country together



Engaging traditional owners



Nhill Karen refugee community



Creating habitat, or just planting trees?



Snape Reserve, 2004



Same view, 2006



Same view, 2009



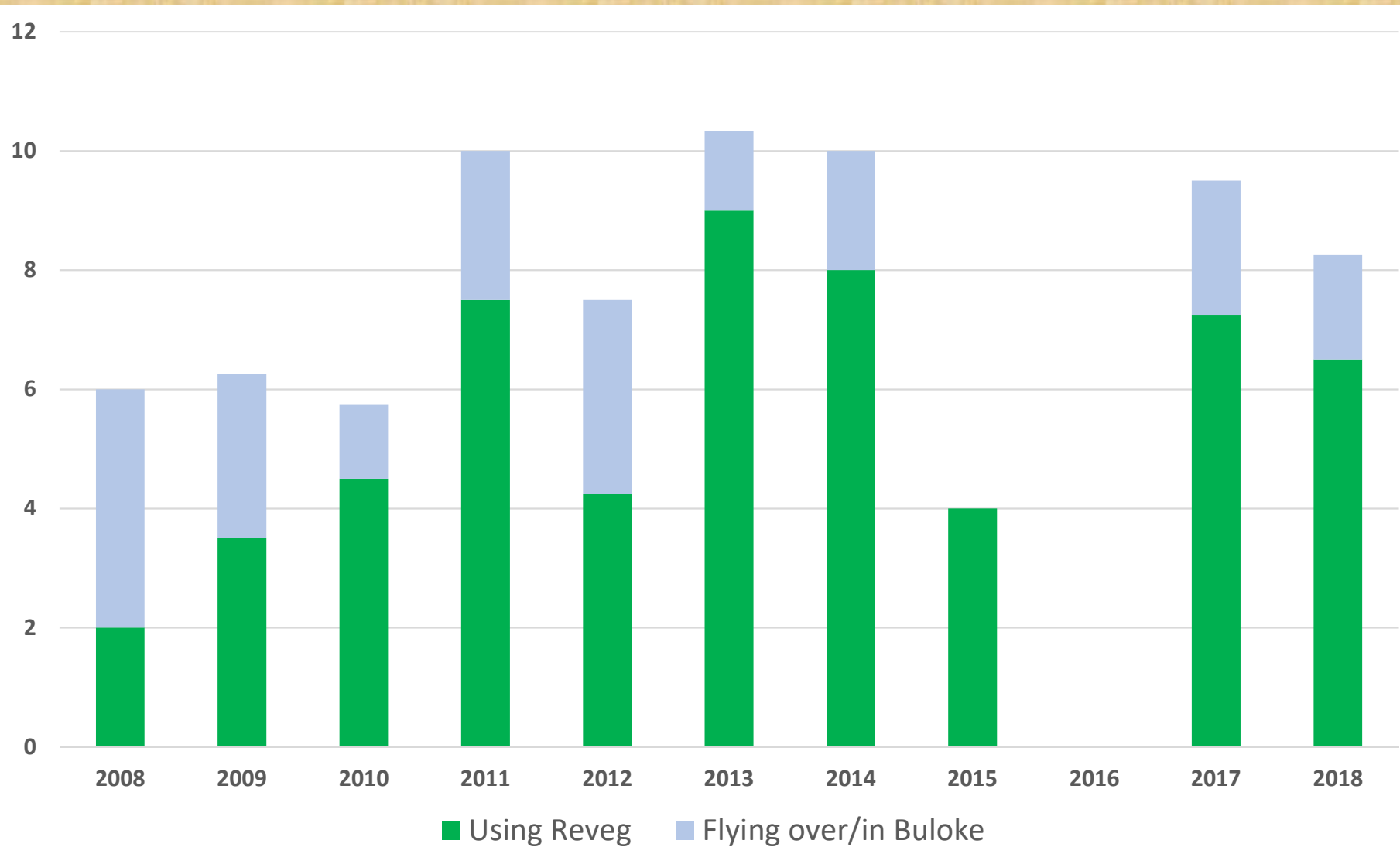
Same view, 2017



Vegetation structure in 2017



Use of revegetation by birds across time



Revegetation does create habitat, but....



Building Biolinks, 1998 to 2021





Thank you to all our partners, supporters and volunteers who have helped make Project Hindmarsh a success.

