



Corner Inlet Broadleaf Seagrass Restoration Project







What are we doing?

- Restoring 200ha of broadleaf seagrass
- Partnership with Corner Inlet Fishers and academic community

A diver in a dark wetsuit and mask is underwater, holding a bright flashlight that illuminates the sandy seabed. The seabed is covered with various marine life, including sea urchins and some coral. The water is clear and blue. A semi-transparent circular overlay is on the left side of the image, containing text.

Why do this project?

- Blue carbon implications
- Compliments JARR Project
- Overcomes urchin impacts
- Landcare goes offshore,
but remains true to its roots

How have we been restoring seagrass meadows?

- Collect seeds
- Grow in aquaculture tanks
- Deploy seedlings in sandbags
- Monitor





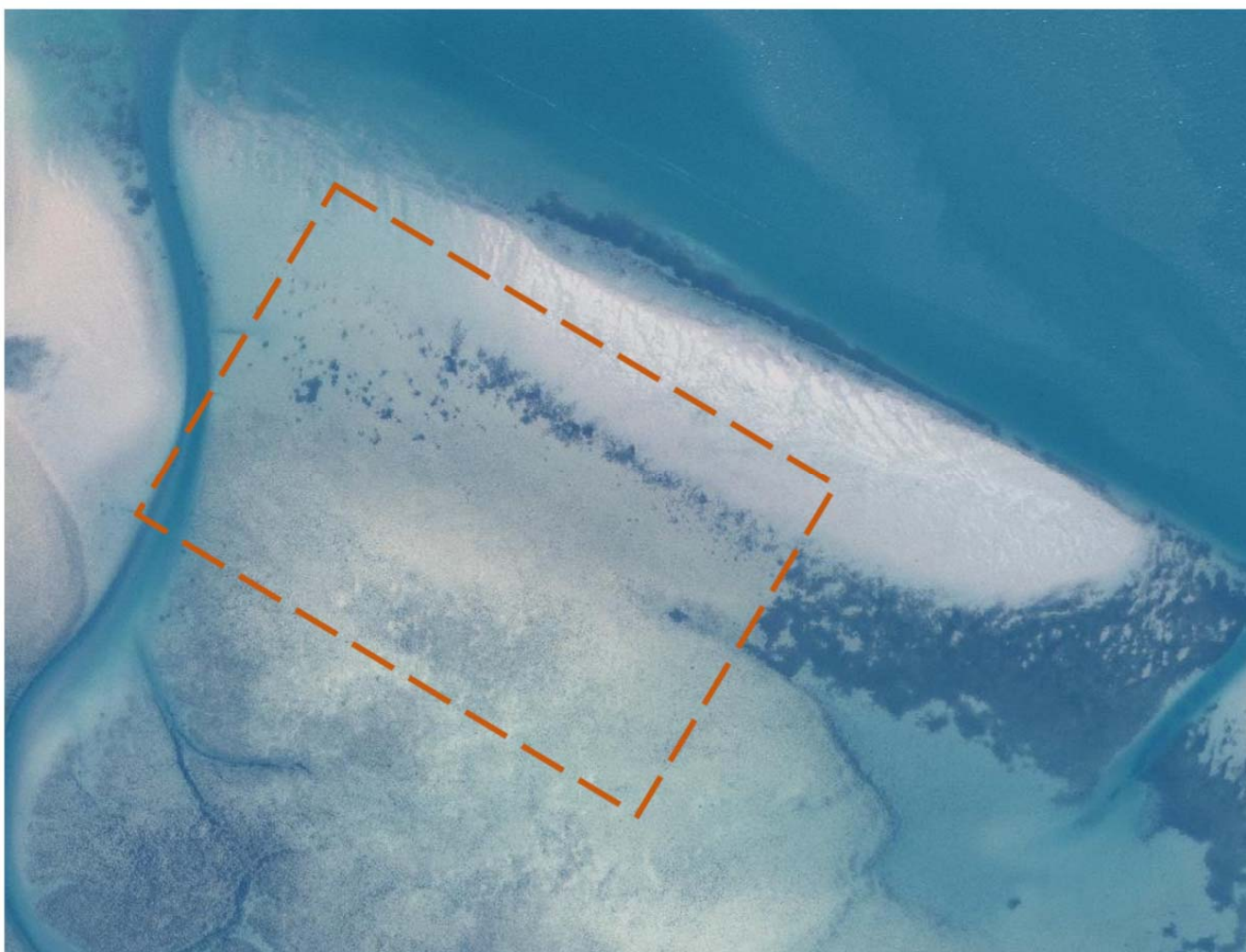
Progress to date

- Nine sites planted across Corner Inlet
- Many Key lessons learnt
- The project is now in its second phase



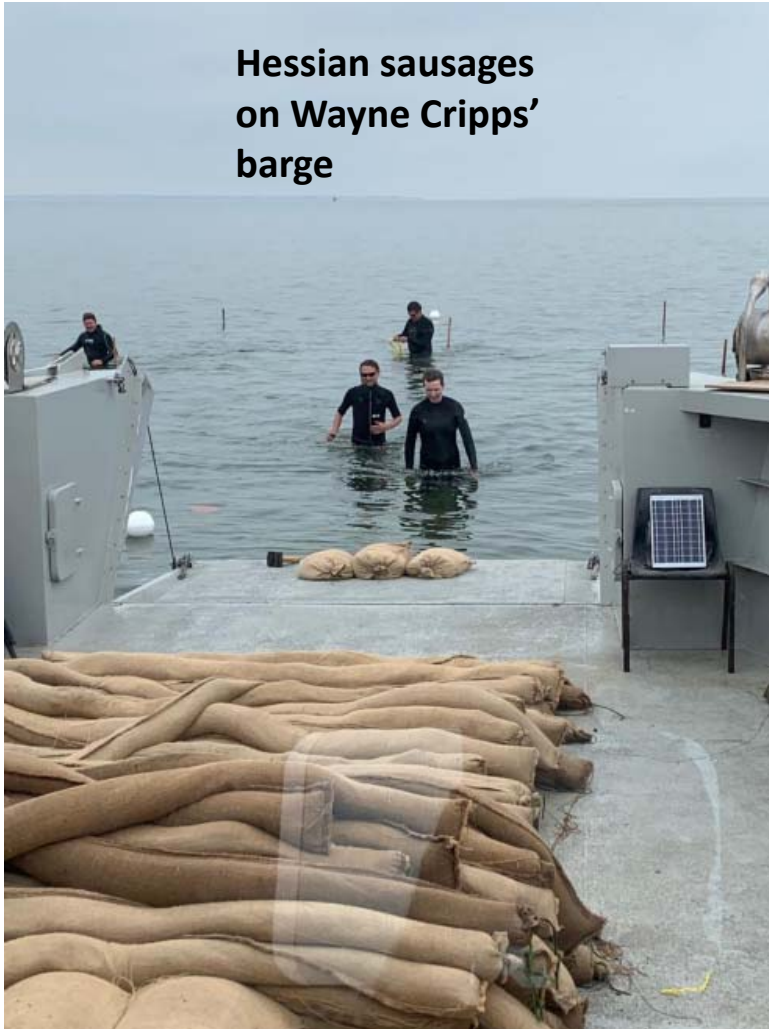








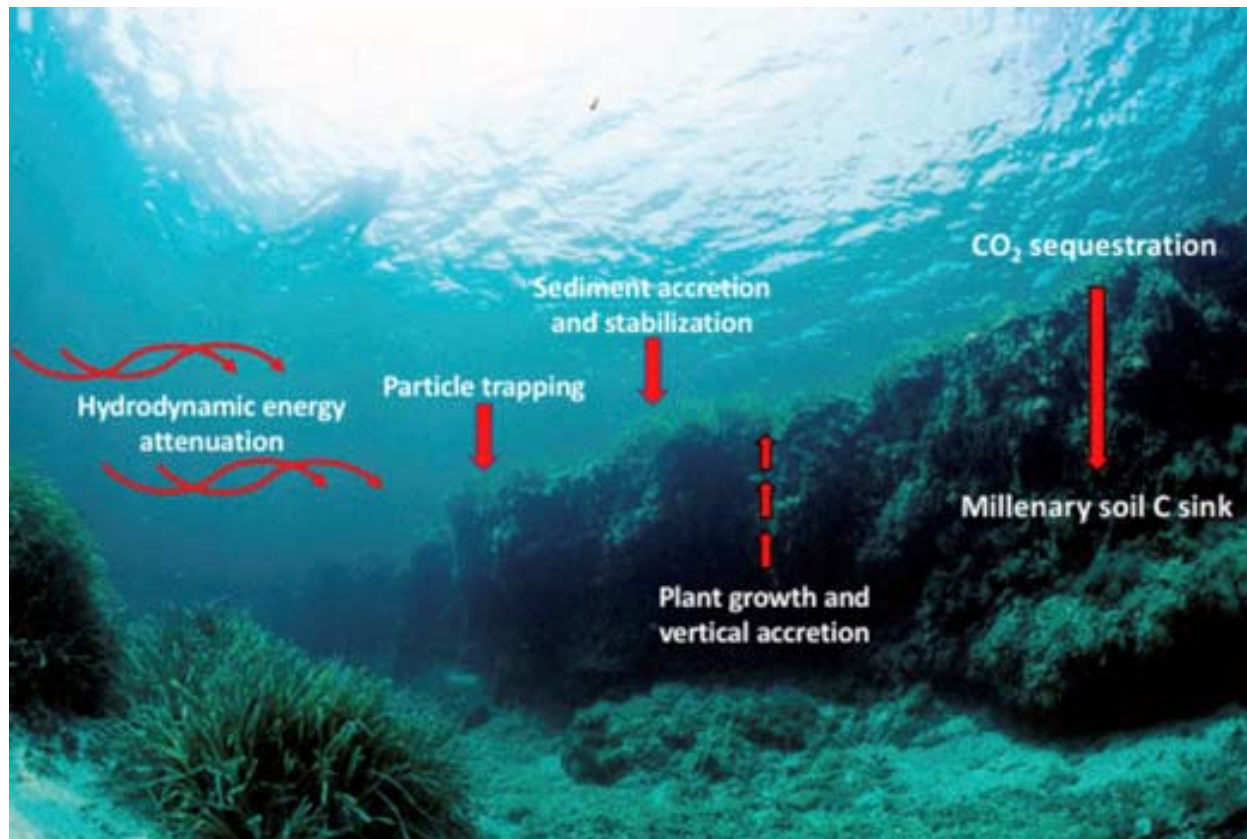
**Hessian sausages
on Wayne Cripps'
barge**



**Hessian sausages
deployed**



Blue Carbon Implications for our work







Questions?