

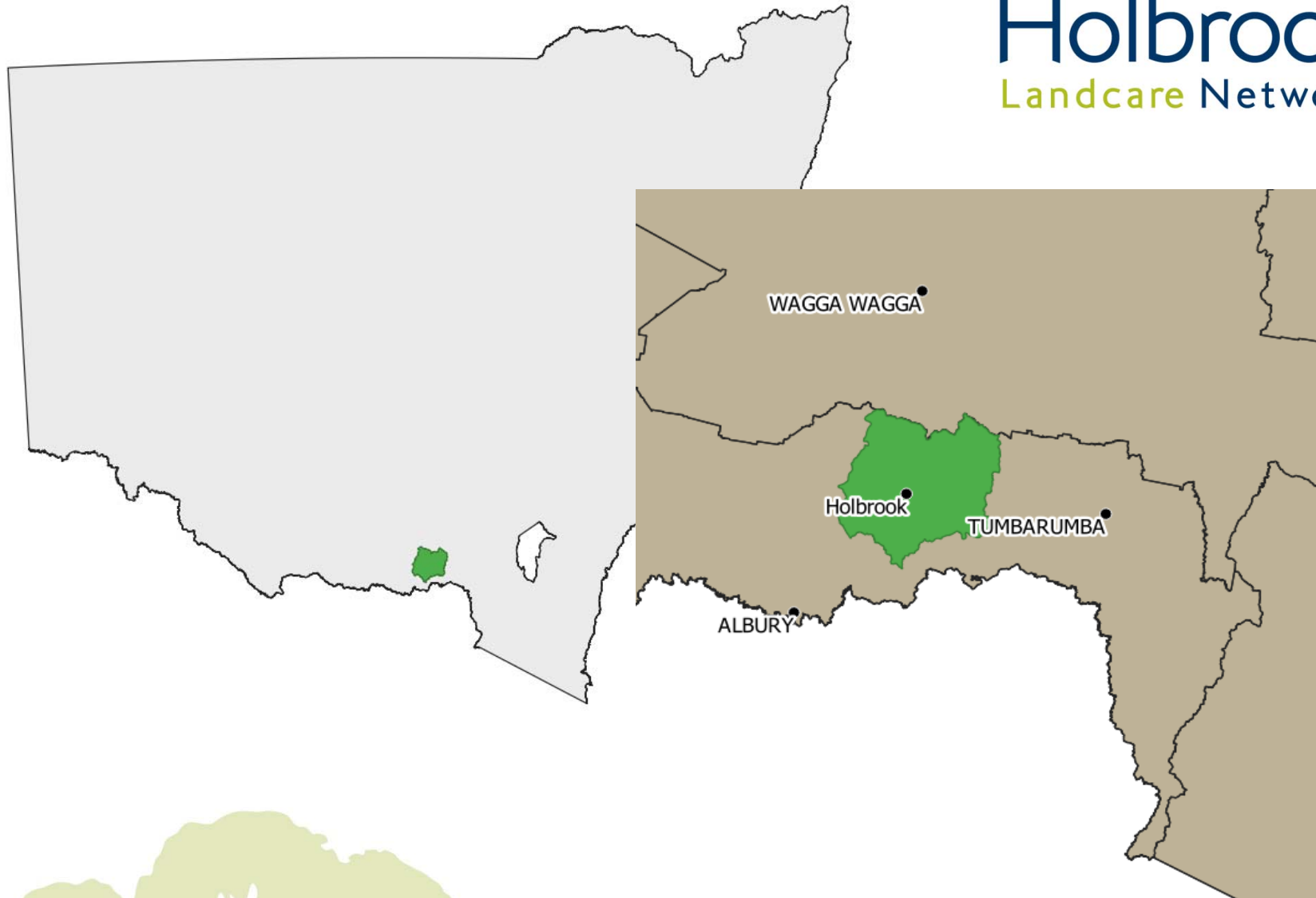


Have we made a difference?

Natural Resource Management impact and outcomes



Holbrook Landcare Network













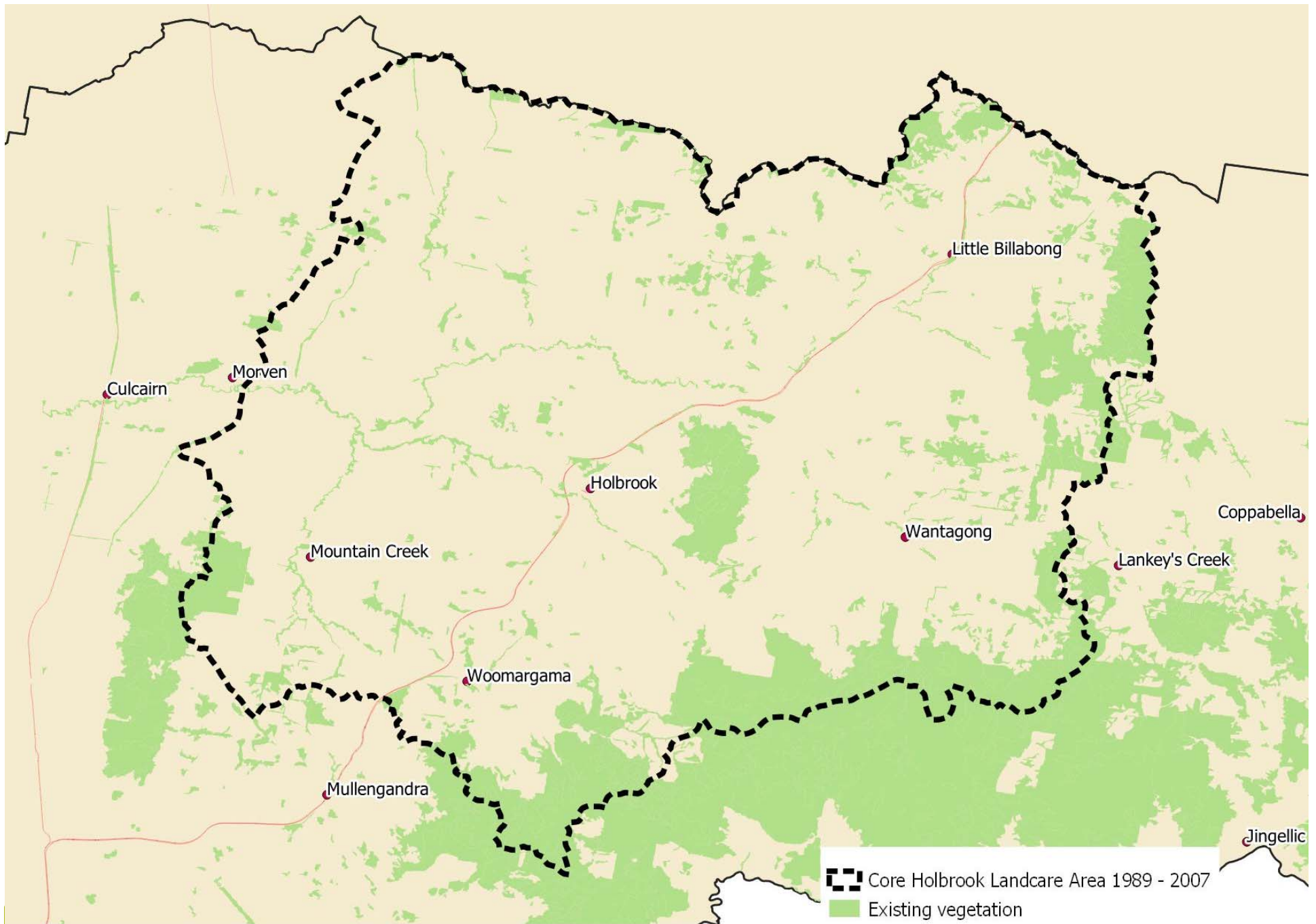




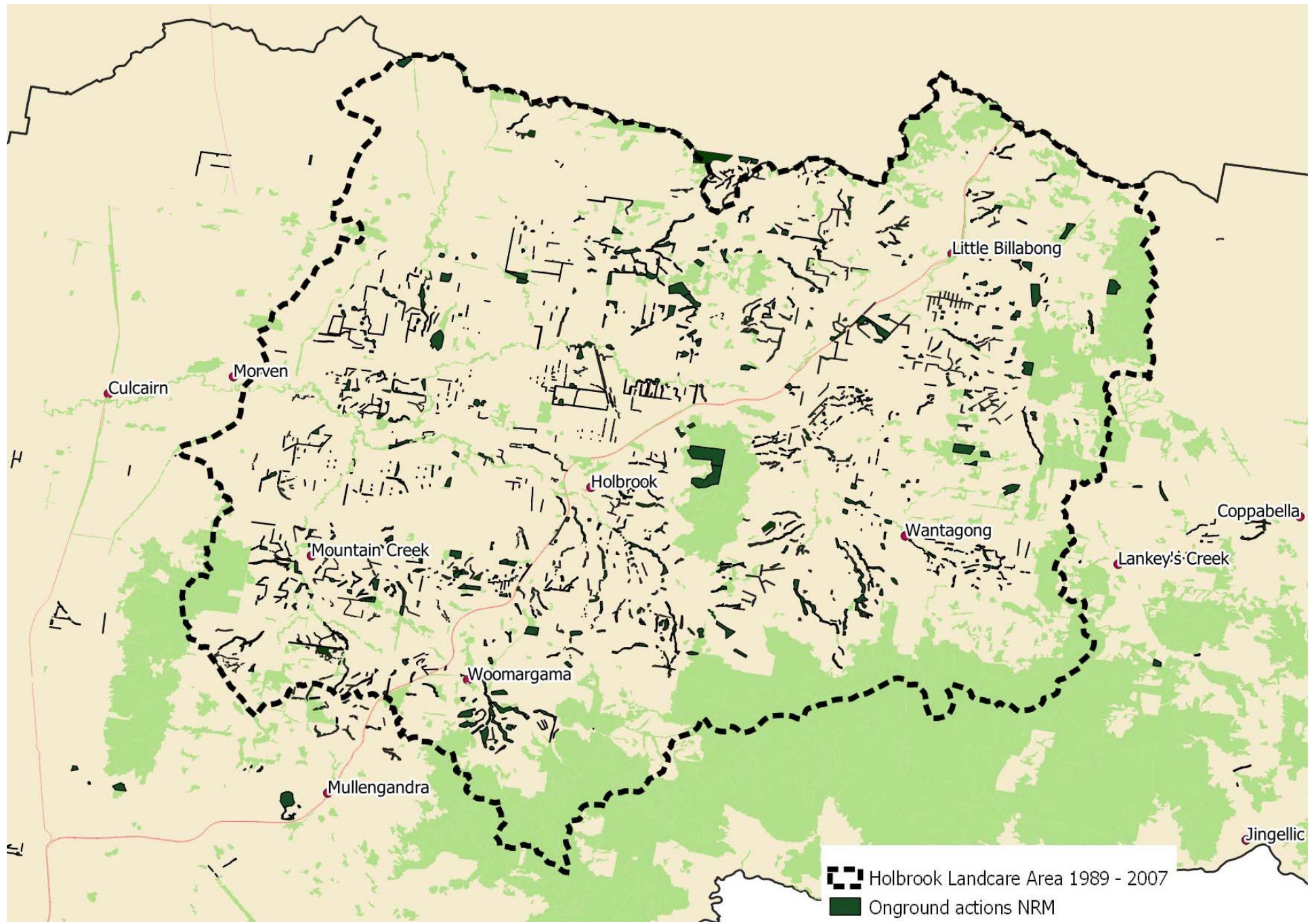
2002

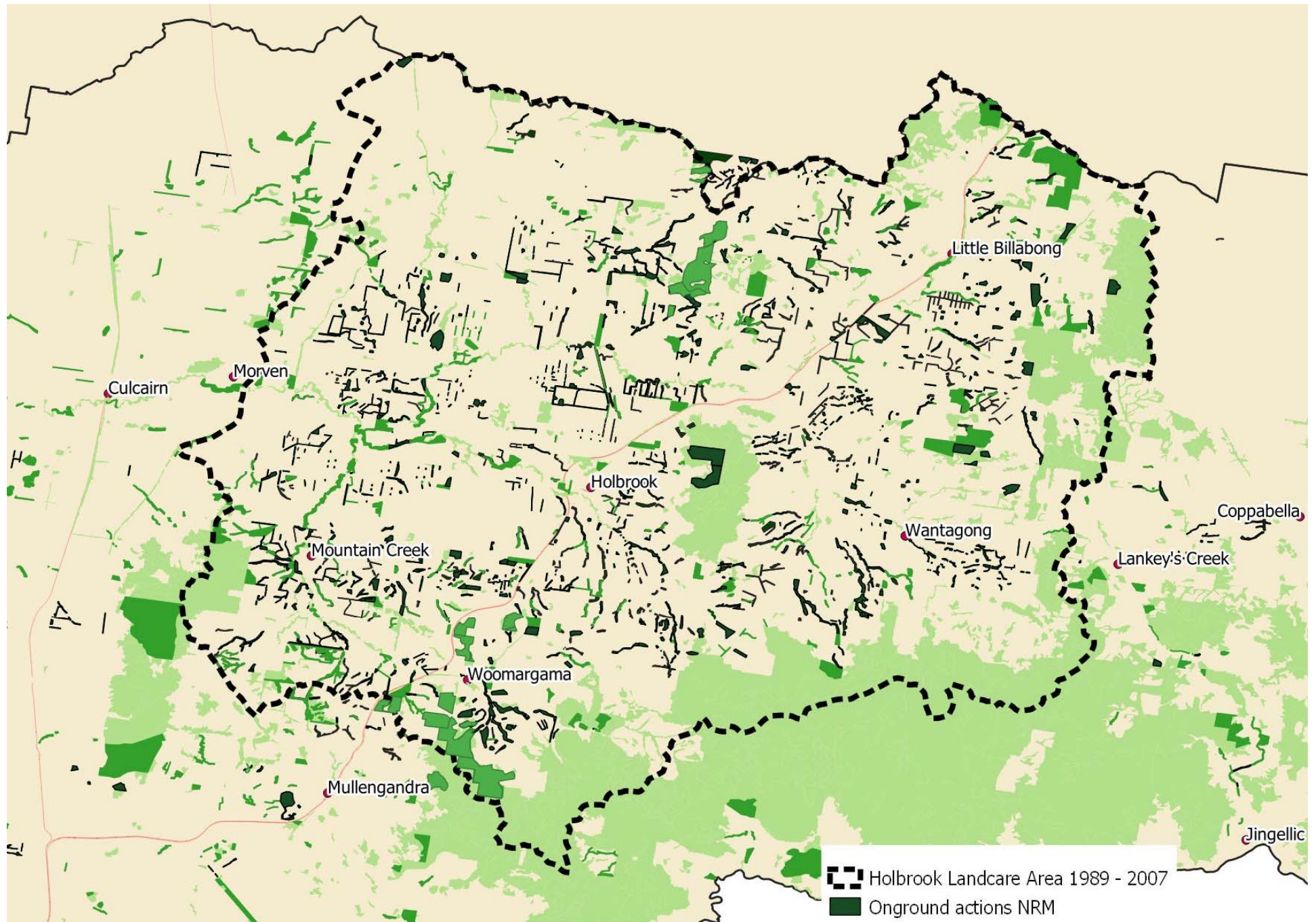


2013



Holbrook Landcare Network





Holbrook Landcare Network

Woomargama Landscape

Legend

- Current Vegetation patches

Benambra Nature Reserve

MOUNTAIN CREEK

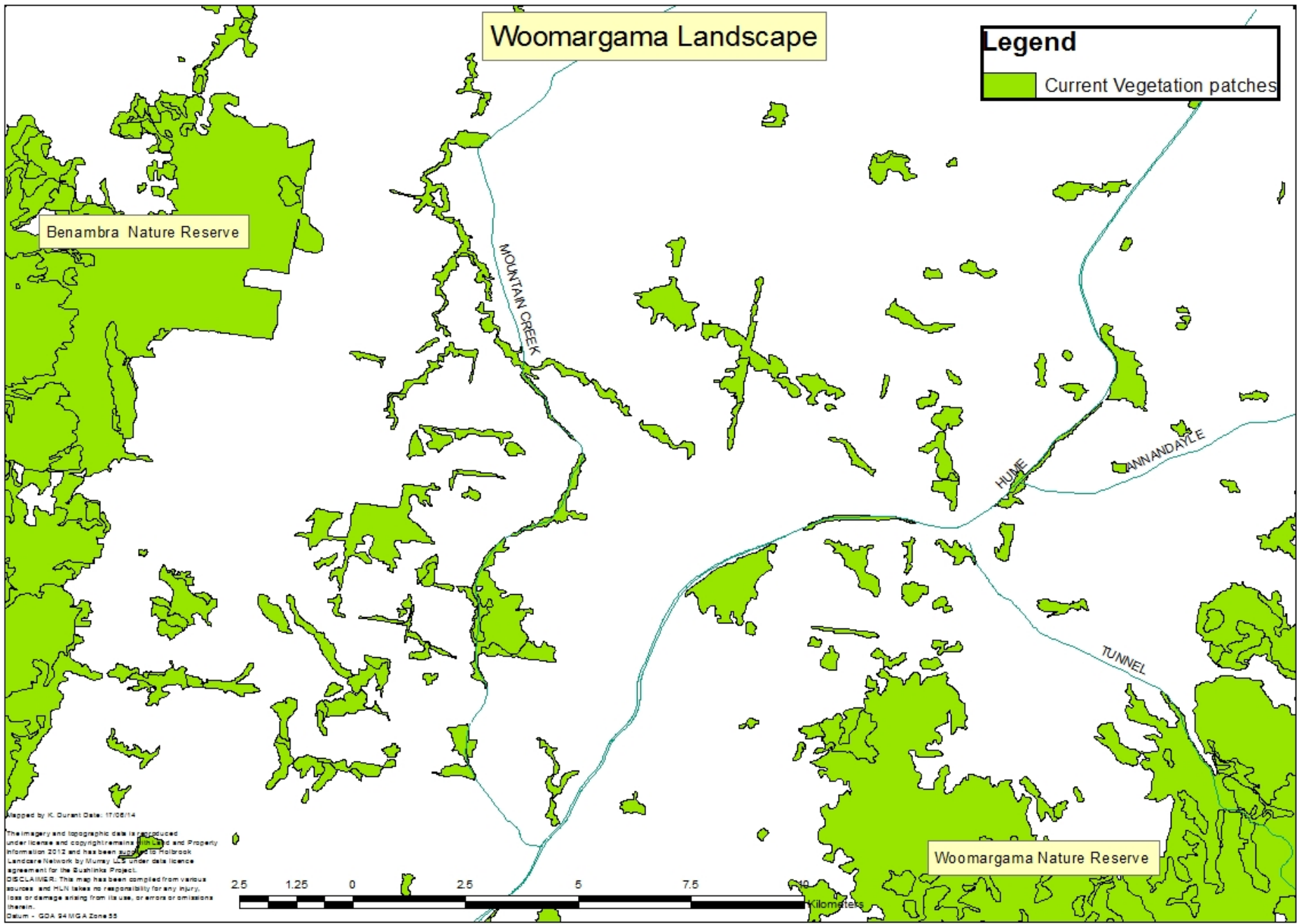
HUME

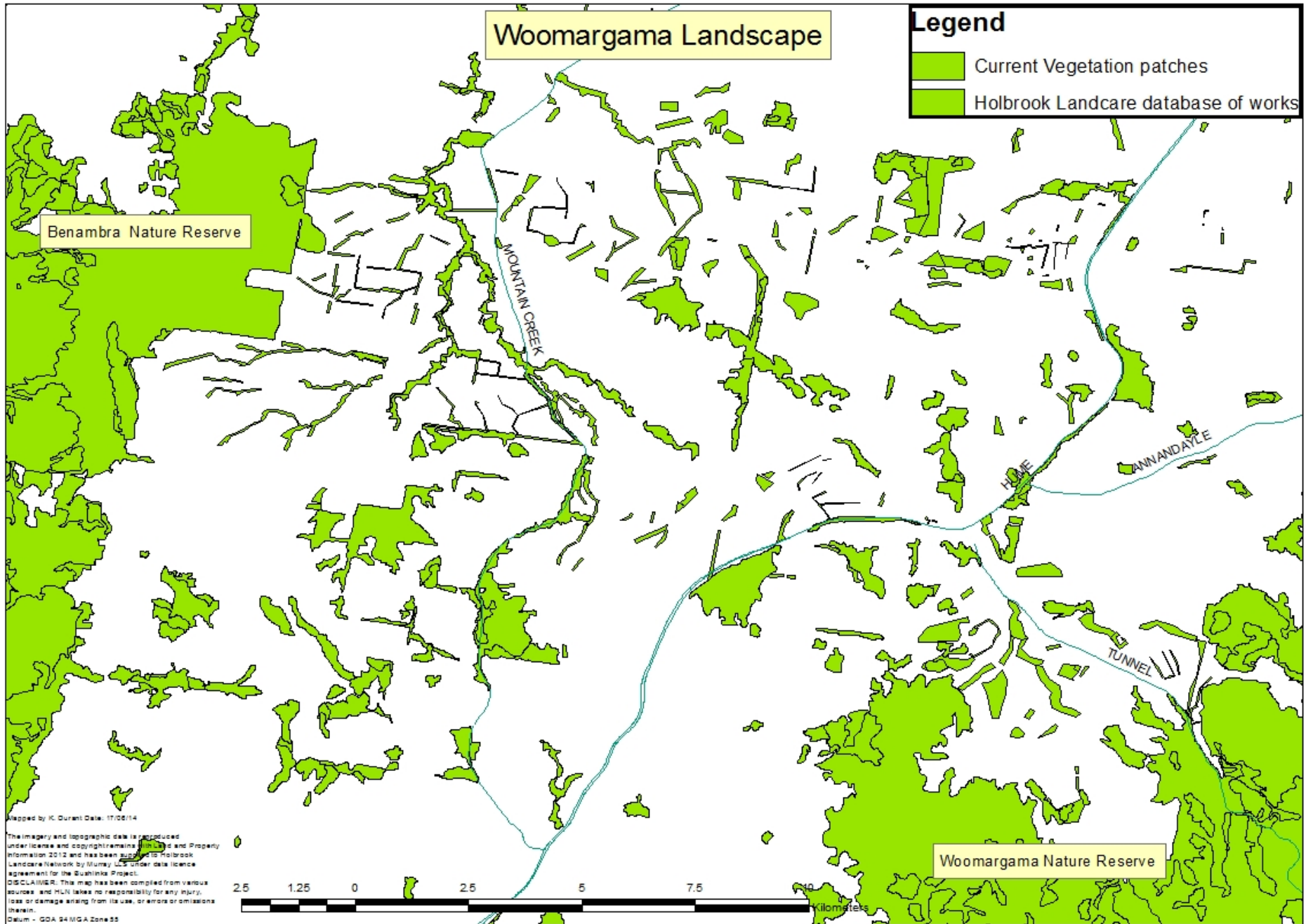
ANNANDALE

TUNNEL

Woomargama Nature Reserve

Mapped by K. Durant Date: 17/06/14
The imagery and topographic data is reproduced under license and copyright remains with the original copyright owner. This map has been compiled from various sources and HLN takes no responsibility for any injury, loss or damage arising from its use, or errors or omissions therein.
Datum - GDA 94 MGA Zone 55





Woomargama Landscape

Legend

- Current Vegetation patches
- Holbrook Landcare database of works
- revegetation interpreted from aerial imagery

Benambra Nature Reserve

WOOMARGAMA CREEK

HOLE

ANNANDAYLE

TUNNEL

Woomargama Nature Reserve

Maped by K. Durant Date: 17/06/14
The imagery and geographic data is reproduced under license and copyright remains with the Property Information 2012 and has been supplied to the Holbrook Landcare Network by Murray LGA under data licence agreement for the Bushlinks Project.
DISCLAIMER: This map has been compiled from various sources and HLN takes no responsibility for any injury, loss or damage arising from its use, or errors or omissions therein.
Datum - GDA 94 MGA Zone 55



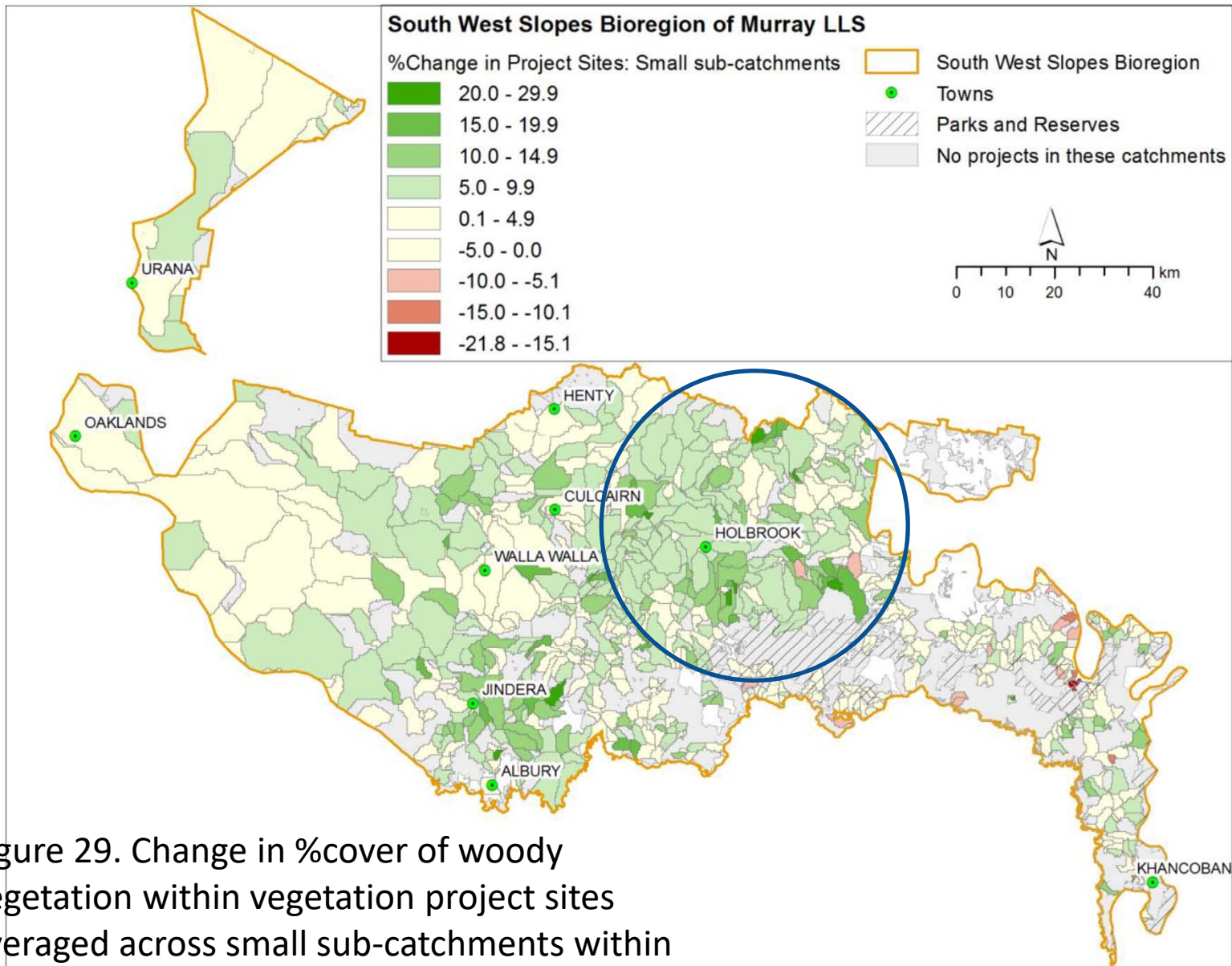


Figure 29. Change in %cover of woody vegetation within vegetation project sites averaged across small sub-catchments within the SWS

SOUTH WEST SLOPES NATIVE VEGETATION RESTORATION AUDIT AND EVALUATION PROJECT (2018) Dr Shane Brooks, Dr Robin Hale and Dr John Morrongiello

- The success rate of individual projects appears high with 87% of sites showing at least some positive change with an average 8% increase in cover from 1990 to 2014
- Modelling across all sites showed that older revegetation projects “held their ground” and maintained cover to 2004 while vegetation was declining across the rest of the landscape in the grip of drought. The positive increase in woody vegetation cover is driven by a large number of projects that have been implemented within the last decade.
- Most vegetation management sites included in this study were established within the last 10 years. Constructed growth trajectories suggest there is potential for woody cover to increase further, perhaps doubling, over the next 10 years within the existing sites.



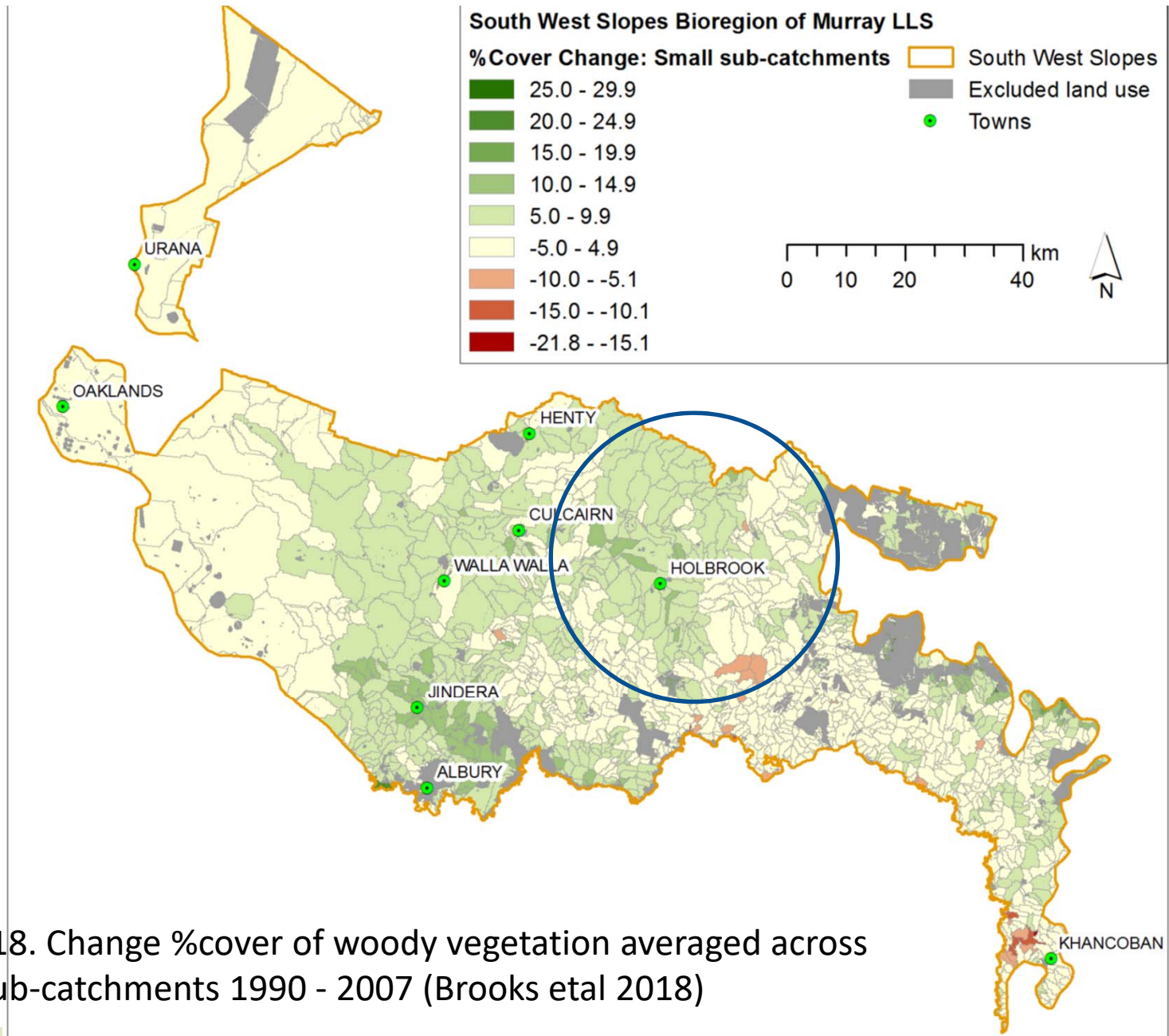


Figure 18. Change %cover of woody vegetation averaged across small sub-catchments 1990 - 2007 (Brooks et al 2018)











CSIRO Bioassess Project 2004 -2006

70% Woodland Bird species recorded in surveys were using planted sites

Some species were using revegetation for breeding

6% increase in canopy health for paddock trees in reveg sites compared to those outside

Ref: Colonisation of native tree and shrub plantings by woodland birds in an agricultural landscape G. W. Barrett A B , D. Freudenberger A , A. Drew A , J. Stol A , A. O. Nicholls A and E. M. Cawsey (2008) Wildlife Research 35(1) 19-32

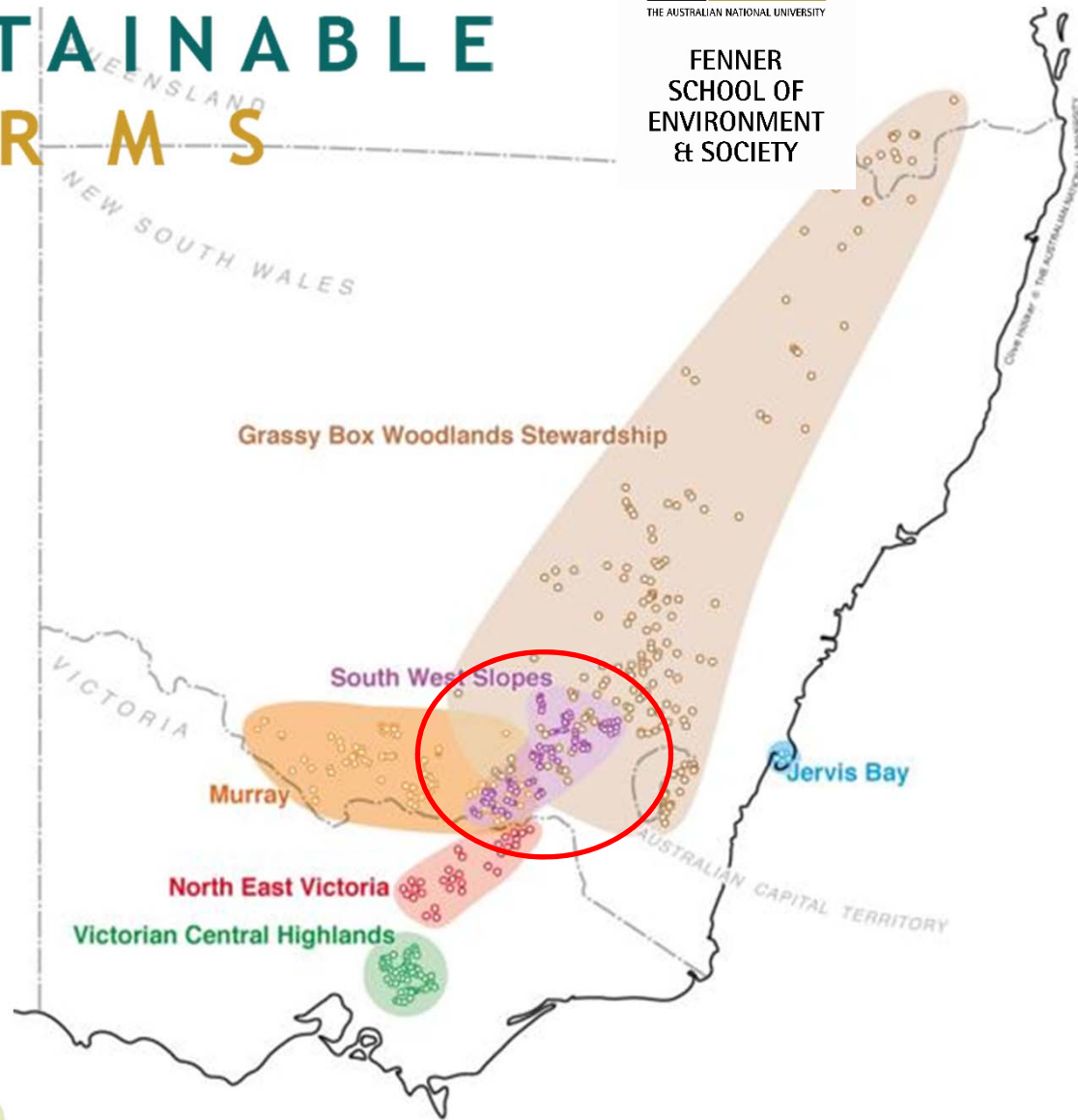


SUSTAINABLE FARMS



FENNER
SCHOOL OF
ENVIRONMENT
& SOCIETY

SWS sites studied since 2002











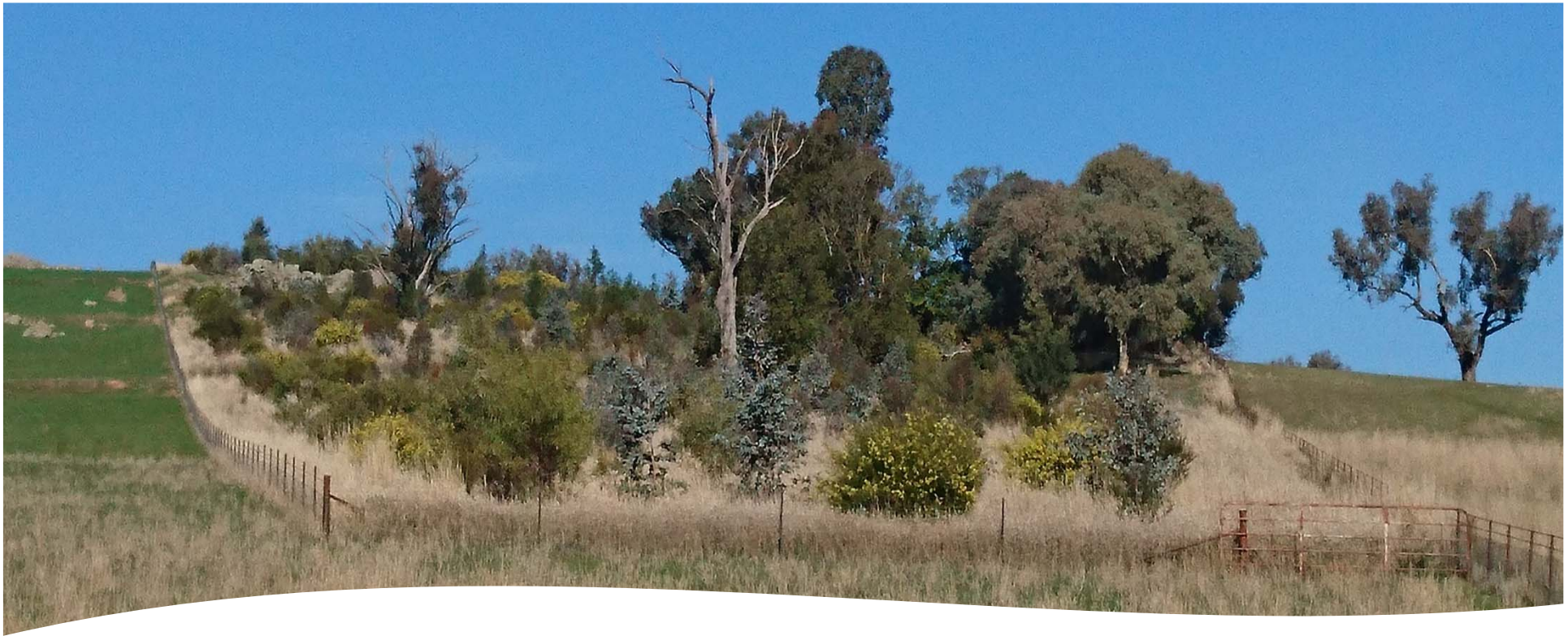
- 90% respondents reported Landcare helped their connection to community

- 46% reported a positive affect in their mental well being



Have we made a difference?

YES!



Challenges of maintaining these outcomes

- The need for revegetation never stops – need to keep up with attrition
- Changing climate, changing land use pressures - nothing stays the same!
- NFF Roadmap for 2030 - \$100B growth – how do we get there in a way that is sustainable and values maintains the natural capital we have built?



How do we keep the momentum going?

- Public Funding for Public Good – incentives and continued support
 - Grants and programs that invest in public good
 - Industry led initiatives - Carbon Neutral Target
 - Environmental Accounting mechanisms

Continue to Support Landcare!