



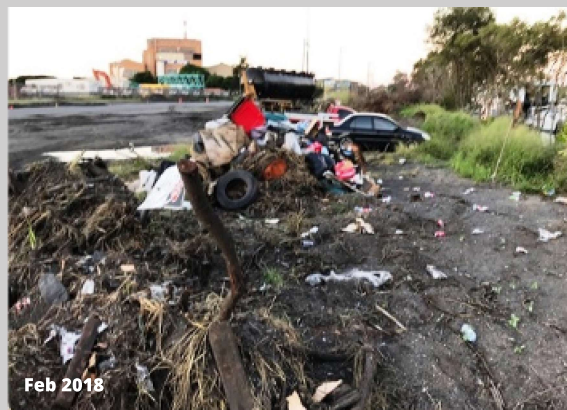
Industrial Landcare GIBSON ISLAND

Project outline

In 2018 Bulimba Creek Catchment Coordinating Committee (B4C) received a Landcare Australia Coca-Cola Coastal Protection Grant for a restoration project at Gibson Island on Conservation Zoned land at Murarrie. This provided seed funding.

On Earth Day, 22nd April 2018, B4C launched the **Gibson Island Rehabilitation Project**.

Local industries and community volunteers gathered to contribute to the environmental and social health of this industrial region and the significant estuarine areas of Aquarium Passage.



Approach

B4C found that, once some of the industry members had joined, it was much easier to then bring more industries together. We started with industry groups that were located at the industrial precinct.

Industries recruited other industries. The networking and team building aspects received positive reception by the industrial partners.

With a strong relationship between B4C and the industries of Gibson island, major environmental recovery of Gibson Island became possible.



Challenges

- Starting the project before any further funding was secured.
- Difficult environmental conditions. Planting into fly ash-based soil, steep embankments, erosion and continued rubbish dumping.
- Industry and environment are not typically close partners.

Superb Fairy Wrens at Gibson Island



Industry and community at Gibson Island



Key Outcomes

Achievements have included:

- Over 3.5ha rehabilitated and revegetated.
- 7443+ native plants established.
- Erosion controls and sediment fencing implemented.
- Bird habitat piles, including wood piles retained & consolidated. Finches, wrens and small birds abundant now.

We have had:

- 18 organised events: clean-ups and planting days with industry and community.
- Over 957 individuals from industry and the community have contributed over 2291 volunteer hours throughout project.
- \$50,000 in-kind works since the beginning of project.



More at bulimbacreek.org.au